

TOTOLINK

Quick Installation Guide

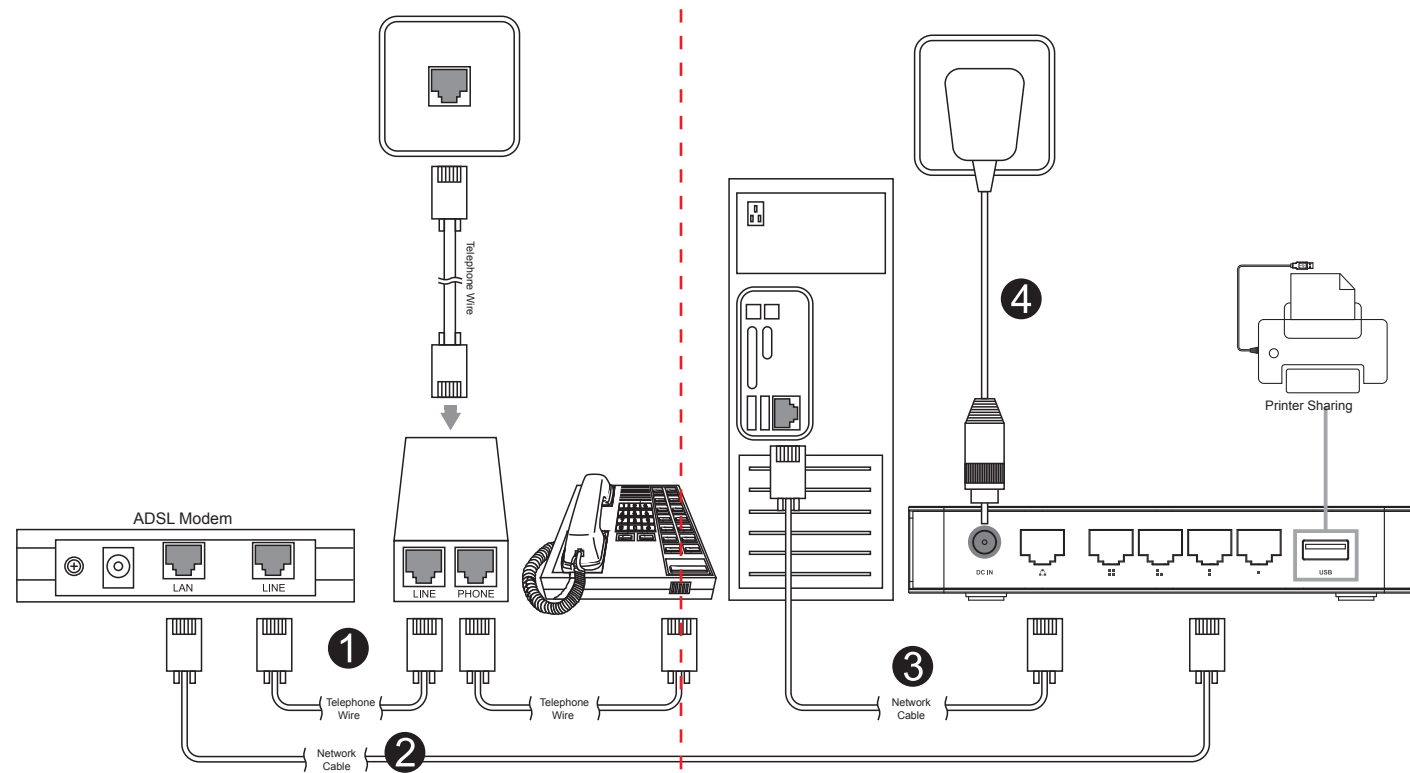
Wireless-N Multifunction Router

TOTOLINK N300RU

Copyrights 2013 by TOTOLINK All rights reserved. Website: <http://www.totolink.net>
Information in this document is subject to change without prior notice.

1 Hardware Installation

If you access Internet by ADSL, please comply with step 1, 2, 3 and 4 in below diagram in correct order; if you access Internet by residential broadband, please comply with step 2, 3 and 4 to connect the WAN port of your router with the residential broadband directly. For Printer sharing, please connect the printer to USB port of this device.



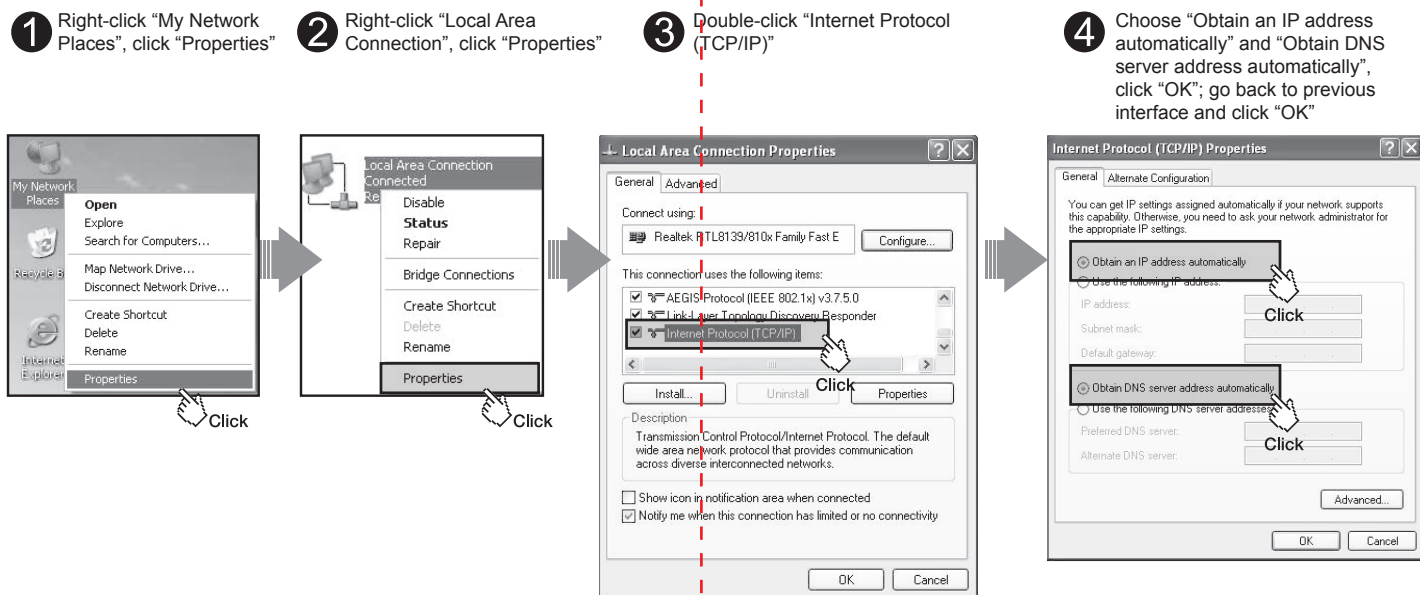
LED Indicator	Description
POWER	This indicator keeps solid blue when the hub is receiving power, otherwise it is off.
CPU	This indicator lights blue when Router powered on.
USB	This indicator keeps solid blue while the USB port working.
WLAN	This indicator lights blue when the wireless function is working.
WAN	When the WAN port is connected to Internet the indicator lights blue. During transmitting or receiving data through the WAN port the indicator blinks blue.
1/2/3/4 LAN	When one of the LAN ports has a successful connection, the corresponding indicator keeps solid blue. During transmitting or receiving data through the LAN port the indicator blinks blue.

NOTE:

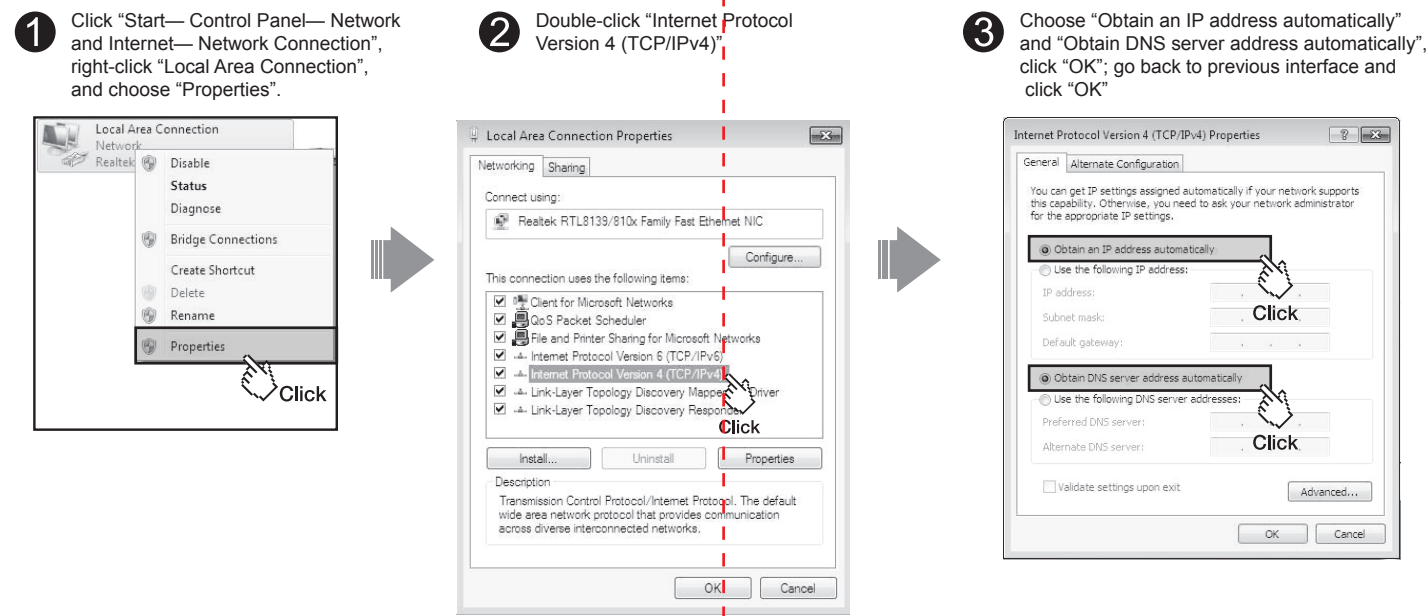
1. Please disconnect the power adapter and all cables during thunderstorm weather;
2. Keep away from heat source and keep well ventilated;
3. Please pay attention to the waterproofing and moisture-proof when storing, transporting and running;
4. The power supply must reach the rated current and power;
5. Put the router in flat places.

2 Set Up PC

Windows 2000/XP For Windows 2000 or Windows XP Operating System, please comply with following steps to set up.

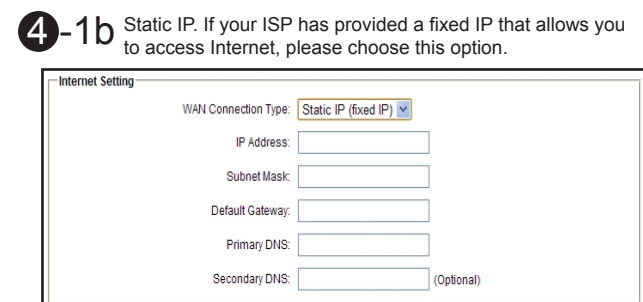
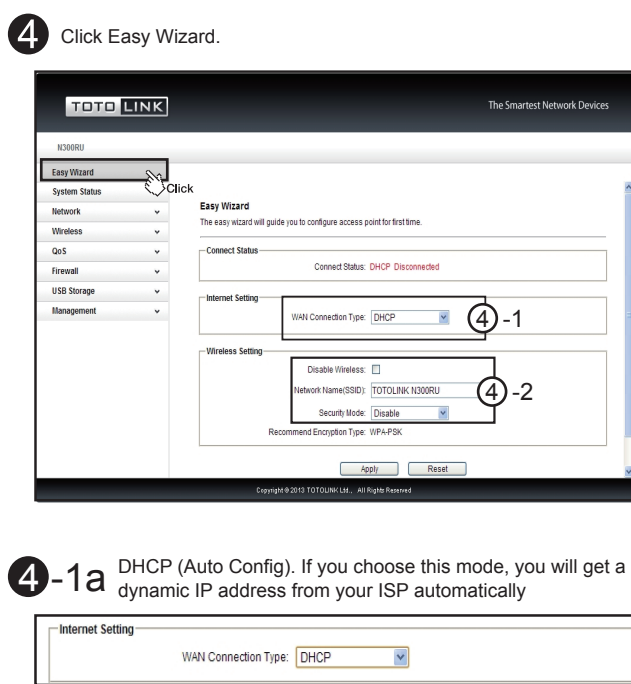
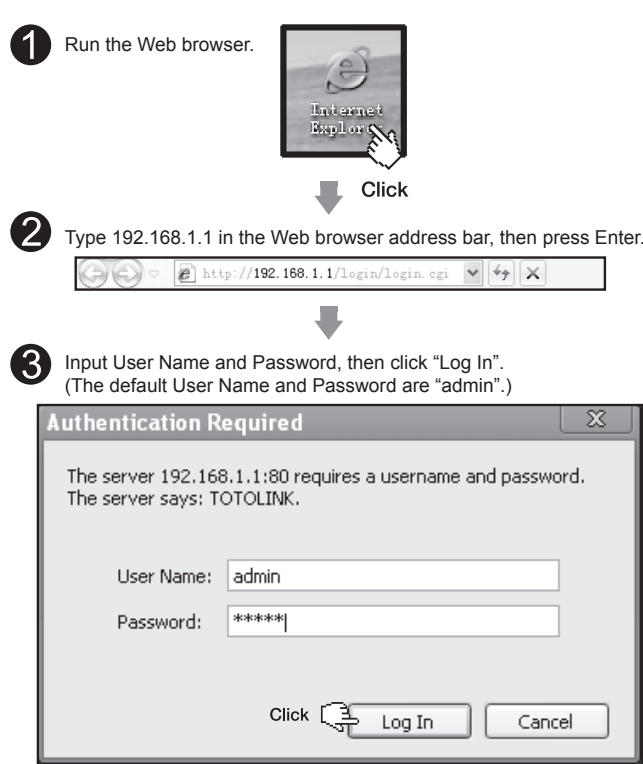


Windows Vista/7 For Windows Vista or Windows 7 Operating System, please comply with following steps to set up.



3 Set Up Router

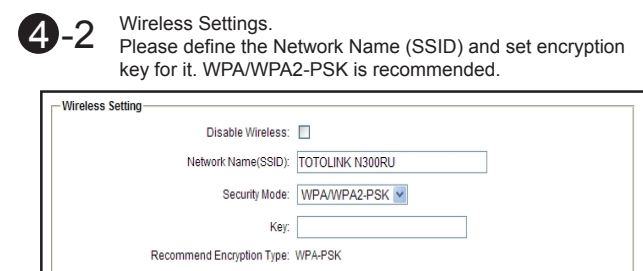
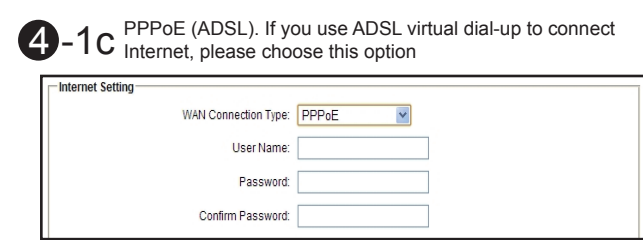
Please set up the router following below steps.



Click Apply to make all settings work.

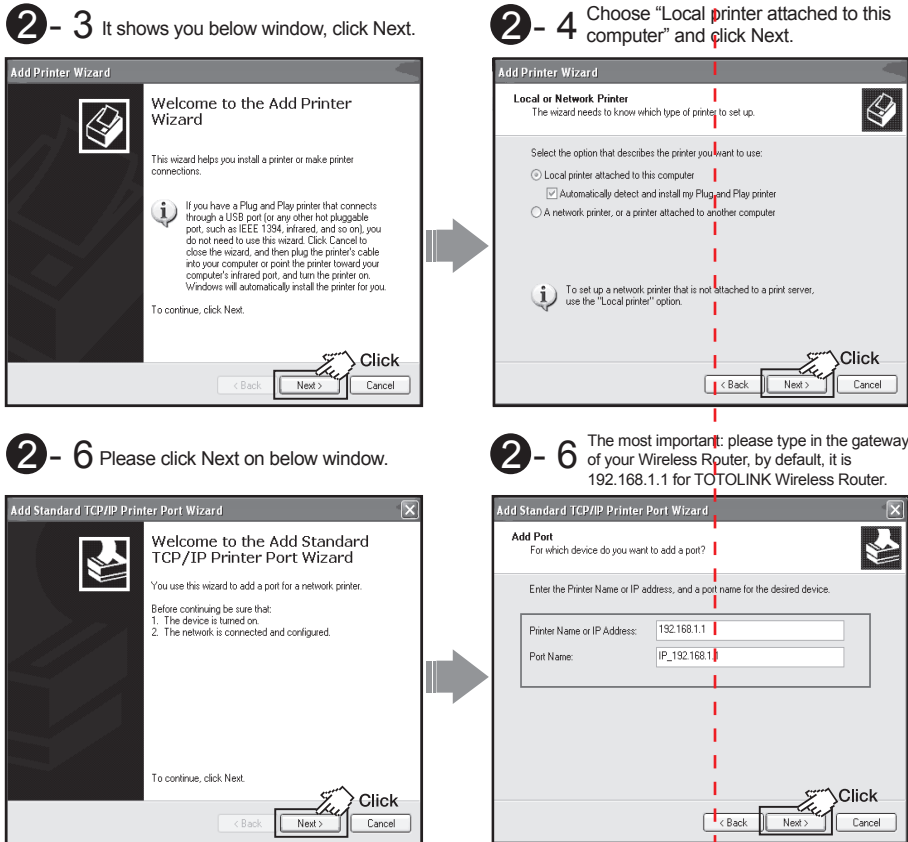
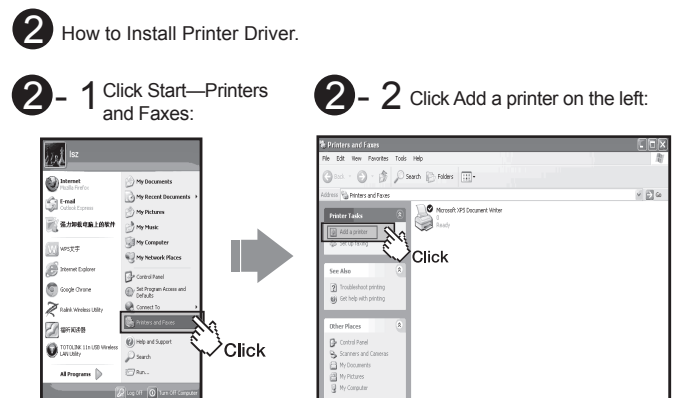
NOTE:

After you set the Key, please remember your Network Name (SSID) and the Key to connect with your wireless LAN.
Press and hold the WPS/RST button for about 5 seconds. It is WPS working which will last for 2 minutes. For about 10 seconds, the router will restore to factory default settings.



4 USB Printer Server Sharing

1. Before you use this function, please make sure:
 - 1-1 All the computers connected to this router have installed Printer Driver. If not, please install it first. (Please Refer to How to Install Printer Driver)
 - 1-2 Your Printer must be a USB Printer that can be connected to the router. If all that are ready, please choose Enable to share the printer service connected to the USB port of router.



Now you have to select the right Printer Manufacturer and model number and install it.

NOTE:
Make sure the Printer has been plugged into the USB port of router, else it will show you that there isn't any printer founded.
After installation, you can share the USB Printer connected to your router. If you don't want to share your Printer any more, just choose Disable.